

ROSEBERY STUDIOS

N° 218 information pack

light-filled studios
situated within a refurbished factory
based in built in the 1930's
rosebery nsw

studio 218

location unit 218, 30-40 harcourt pde
rosebery, 2018

size 183sqm

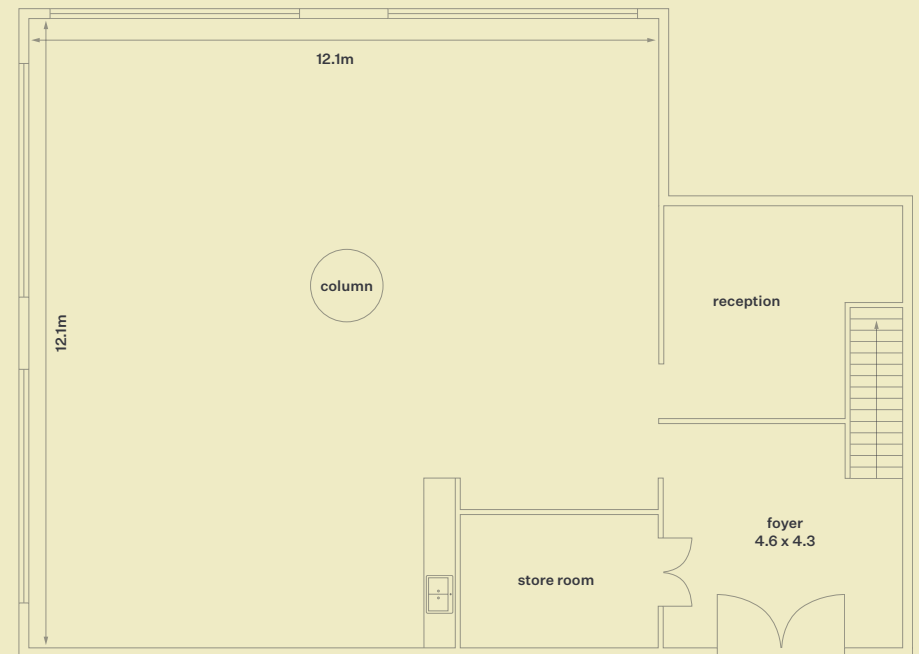
daylight four large windows in a corner suite
two east-facing, two south facing

features rustic concrete flooring, high ceiling
clearance, 32-amp 3-phase power,
air conditioning, kitchen with ziptap,
blockout blinds, 2 onsite parking
spaces



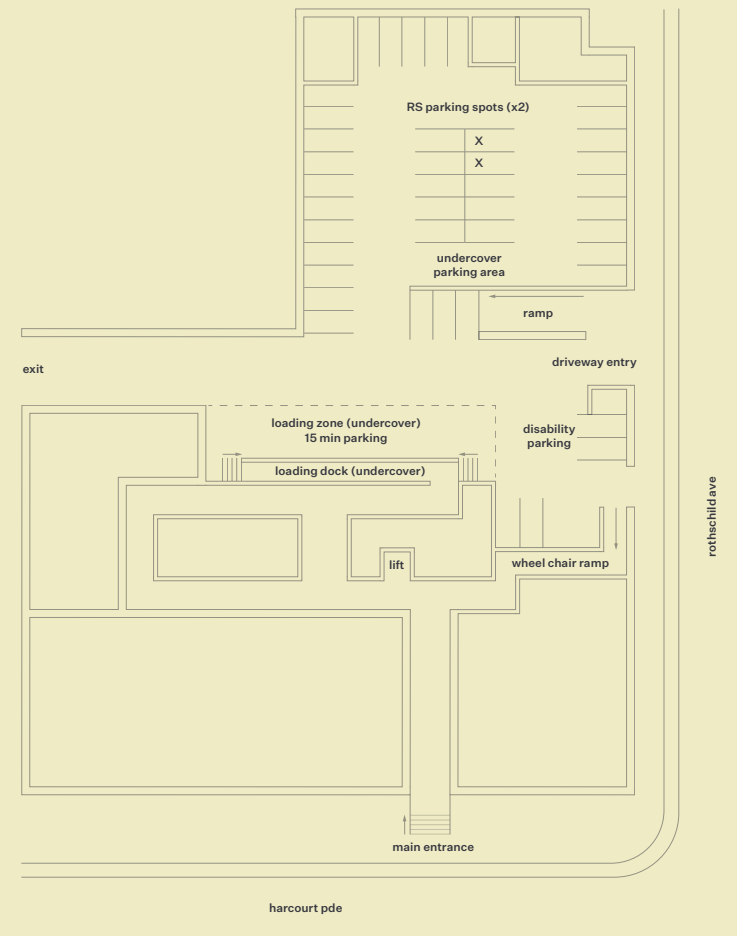
inclusions

- studio 218
- x1 large mirror
 - x2 clothing racks
 - x1 commercial grade jiffy steamer
 - x10 shot bags
 - x6 avenger c-stands with detachable base
 - x10 poly boards
 - x4 poly feet
 - x4 extention leads
 - x4 powerboards
 - x4 stools with caster wheels
 - x5 makeup chairs
 - x1 large hair and make-up table with wheels
 - x3 white tables with wheels
 - x1 digital table with wheels
 - x1 jbl bluetooth speaker
 - free wifi



how to access

studio 218 the loading dock and lift access can be found at the back of the building via rothschild ave. for bump-in and bump-out, there are 15-minute parking bays available in the loading dock area. crew members have access to two designated parking bays located in the undercover area marked with 218 on the floor—please refrain from parking in any other bays on the premises.



street parking

studio 218 for all other crew members, ample street parking is available nearby.

