

ROSEBERY STUDIOS

Nº 211 information pack

light-filled studios
situated within a refurbished factory
based in rosebery nsw
built in the 1930's

studio 211

location unit 211, 30-40 harcourt pde
rosebery, 2018

size 60sqm

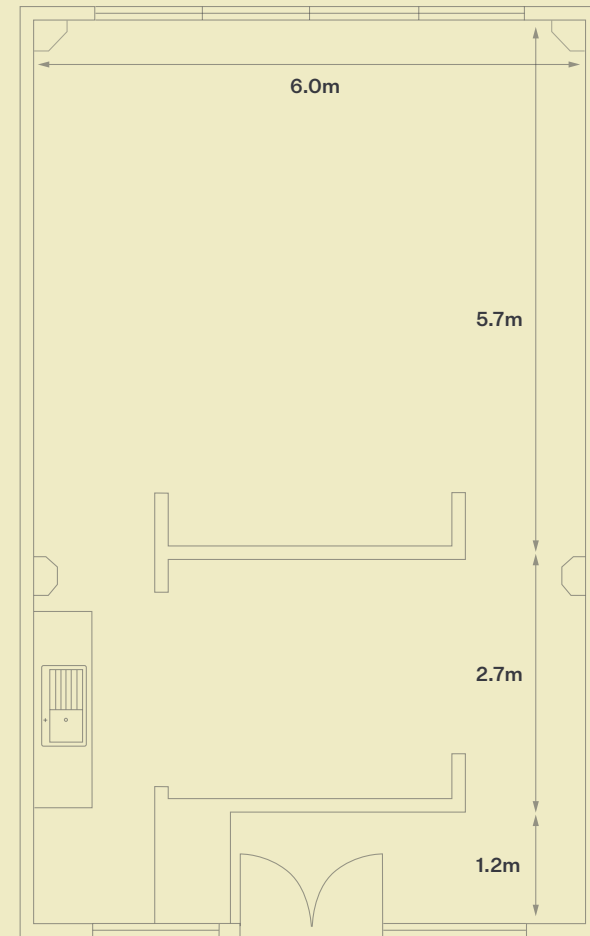
daylight large north-facing window
ample natural light

features white polished flooring, air
conditioning, dedicated hair,
makeup + styling area, kitchenette
with tea and coffee



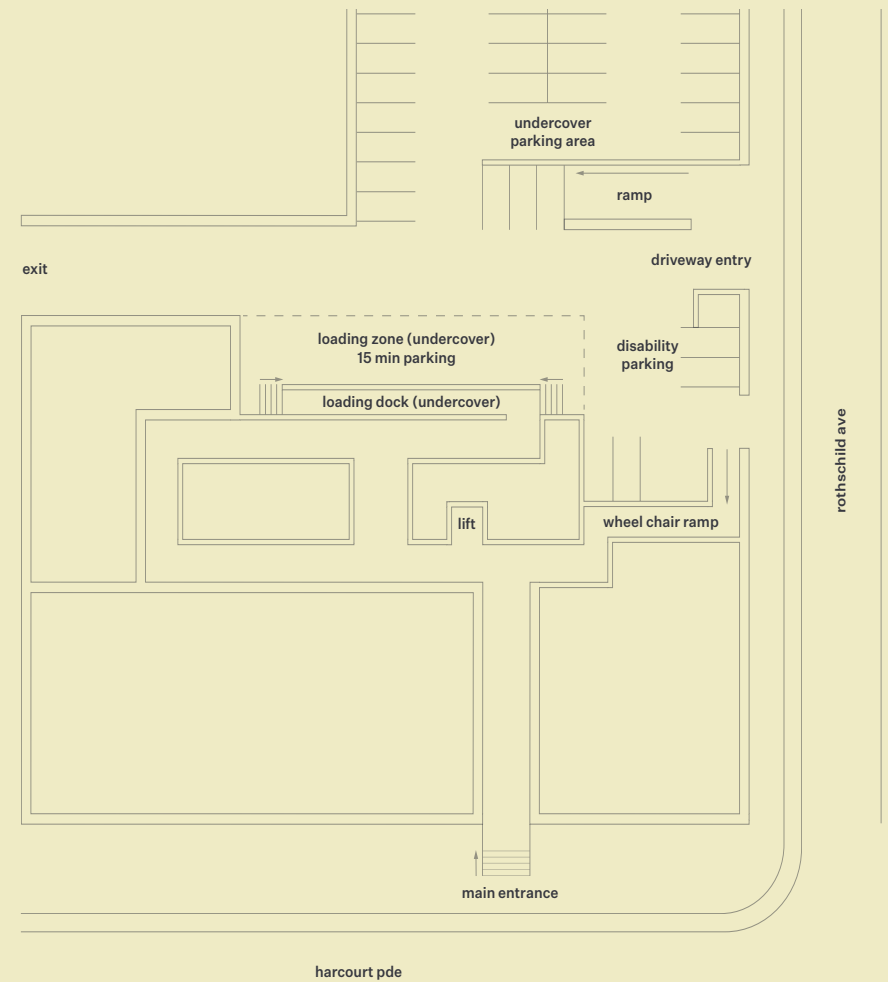
inclusions

- studio 211
- x1 large mirror
 - x1 clothing rack
 - x1 commercial Grade Jiffy Steamer
 - x6 shot bags
 - x4 avenger c-stands with detachable base
 - x4 poly boards
 - x4 poly Feet
 - x3 extention Leads
 - x2 powerboards
 - x4 a-frame clips
 - x2 stools with wheels
 - x3 makeup Chairs
 - x1 large hair and Make-up table with wheels
 - x1 black standing table
 - x1 digital table with wheels
 - x1 bluetooth speaker



how to access

studio 211 the loading dock and lift access can be found at the back of the building via rothschild ave. for bump-in and bump-out, there are 15-minute parking bays available in the loading dock area— please refrain from parking in any other bays on the premises



street parking

studio 211 for all crew members, ample street parking is available nearby.

